

SPOT WHAT'S WRONG: CAR FACTORY

Can you see nine nutty things happening on this high-tech assembly line?

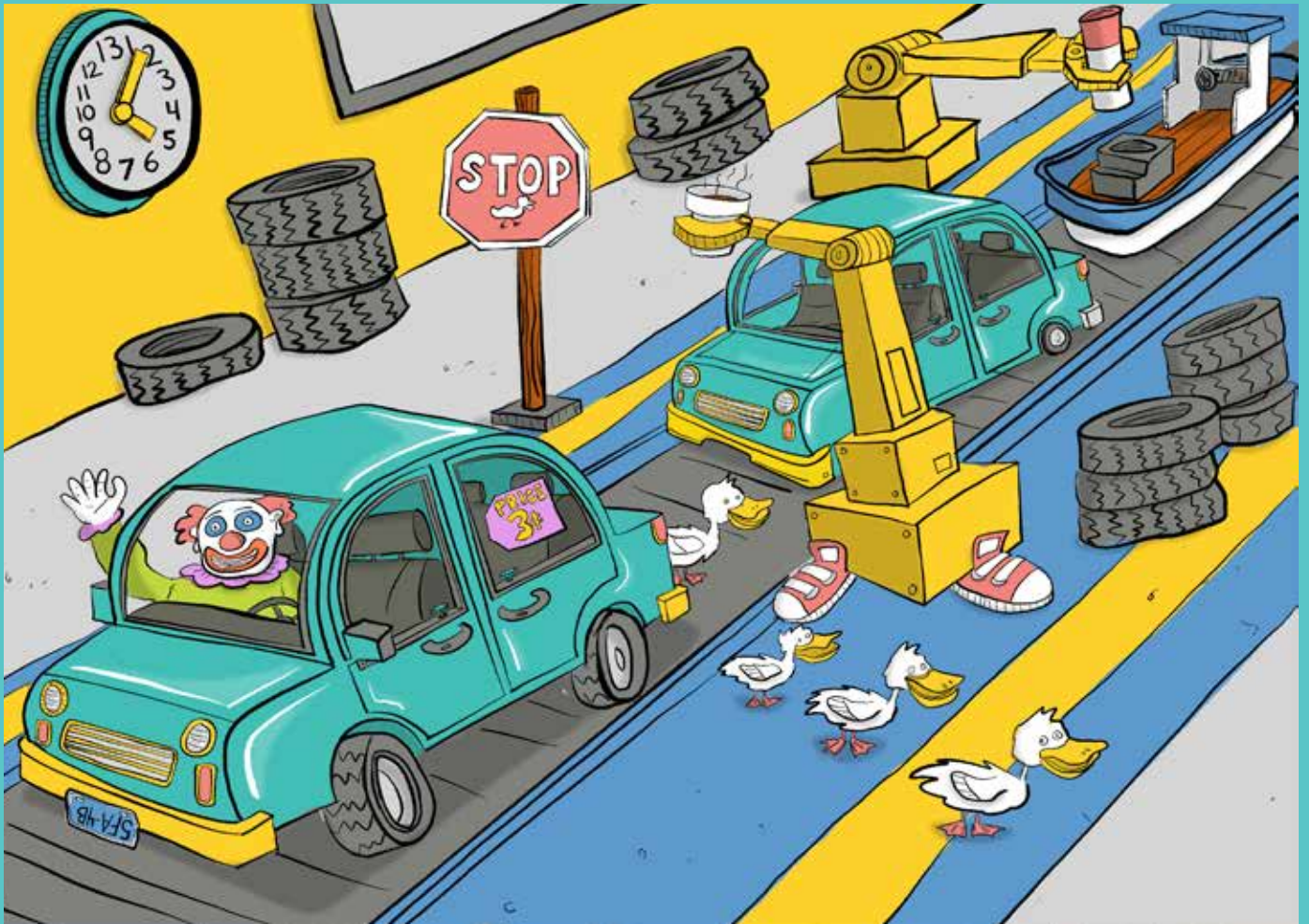


Illustration: Brent Moser

ANSWER KEY: 1. A robot is holding a cup of coffee. 2. There's a boat on the line. 3. A robot is wearing sneakers. 4. There's a clown in one of the cars. 5. There's a stop sign on the line. 6. A line of ducks is crossing. 7. Clock on the wall goes to 13. 8. License plate is upside down. 9. Price tag on the finished car says 3 cents.